

EVIE

Официальный Дистрибьютор в России

**VBG** | COSMETIC [www.vbg-cosmetic.ru](http://www.vbg-cosmetic.ru)

+7 (499) 113-66-59 Пн-Пт: с 9:00 до 18:00



stayve  
**CATALOG**

Korean cosmeceutical  
Ampoule Brand



# “ Beautiful life with EVIE ”

Fulfilling a beautiful lifestyle for you. Non-artificial and healthy beauty. EVIE leads the global skincare trend.

”

## COMPANY TIME LINE

- 2006**  
Company founded in South Korea
- 2016**  
Began exporting to China  
Exports to Southeast Asia  
Exports to Russia  
Exports to Europe  
Exports to the Middle East  
Exports to North America
- 2017**  
Exports to South America
- Current** Exports to worldwide

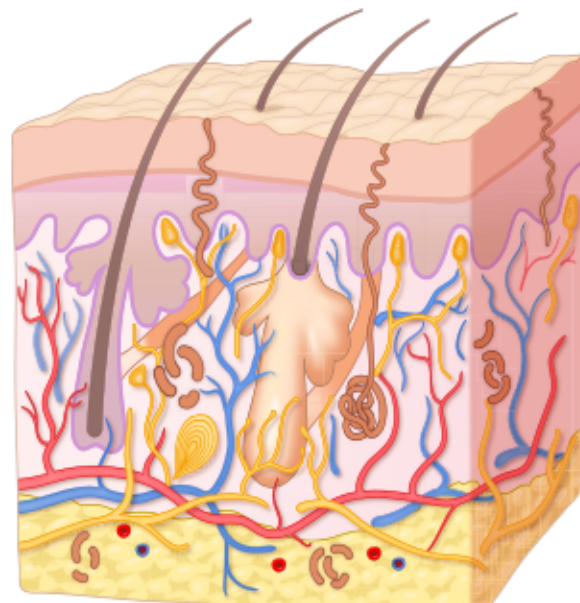
# Stay GLOW with Stayve

Healthful and reliable skincare products Stayve, experts' choice.



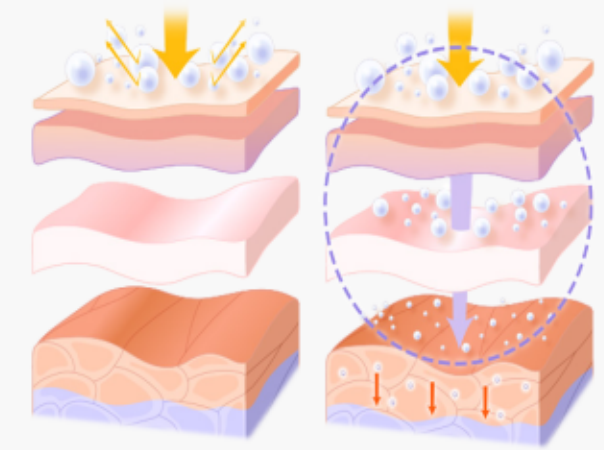
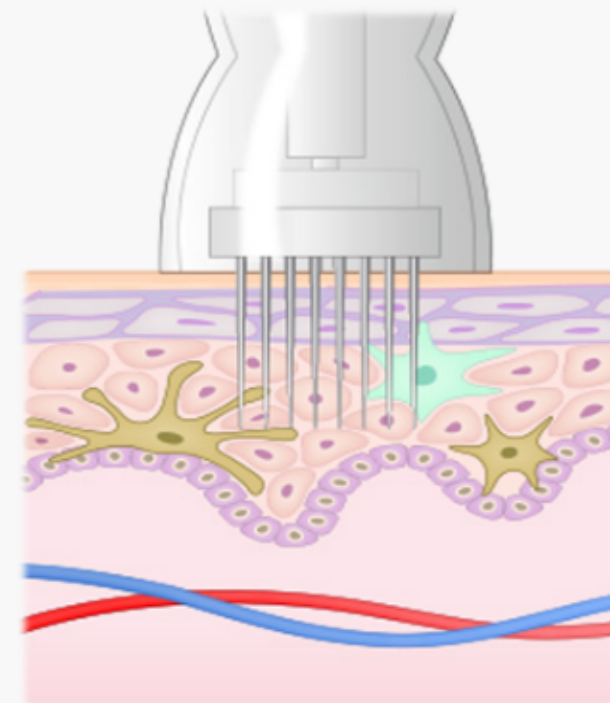
# WHAT IS MTS?

MTS is a treatment system that stimulates fibroblasts and generates collagen by using nano-needles to prick small holes on the skin. This creates an environment that facilitates the penetration of cosmetic products and dermatology drugs with large molecules that do not polarize easily.



Cosmetic products do not absorb into the skin and only remain on the layer of dead skin cells when applied with the hands. Only 0.03%-2% of the product is absorbed into the skin, and the rest remains on the outermost layer until it gets washed away.

MTS involves the use of needles to increase product absorption. This helps to deliver the active ingredients deeper into the epidermis.



Ampoules that do not contain BB components such as booster ampoules can be used with needles that are 0.2mm~1.0mm in length. Only nano-needles or plastic needles should be used with BB Glow ampoules. Long needles should be avoided because of the minuscule amount of BB coloring agent present in BB Glow. Only KFDA approved safe raw material goes into the making of the titanium dioxide presented in Stayve BB Glow. The same kind of titanium dioxide can be found in BB cream, foundation, toothpaste, chewing gum, etc.

## Precaution

Pigments or tattoo inks contain high amounts of coloring and these are not considered as cosmetics; tattoo inks have more than 20% of coloring. These products should never be used for BB Glow treatment.



# STAYVE BB Glow Ampoule

This product helps maintain beautiful skin by providing immediate coverage without irritating the skin. It is ideal to get one treatment per 1~2 weeks. Stay consistent with the treatments for a minimum of five sessions. Stayve BB Glow Ampoule contains a very small amount of coloring agent. The treatment is safe since it only involves nano-needles. Therefore, it doesn't remain in the skin for a long period of time. It is not a treatment like tattoo or micro-pigmentation. It does not last on the skin for six months or more like the way tattoos or micro-pigmentation would, but it does last longer than treatments carried out with the hands or typical treatments that involve aesthetic machines.



**NO.1 Light**  
8ml \* 12pcs/box

Colors used for the brightest skin tones. Ideal shade for people with extra light skin tones.



**No.1-2 Light Rose**  
8ml \* 10pcs/box

Colors used for light skin with pink undertones. Ideal shade for people with light tone but with pink undertones.



**No.2 Medium**  
8ml \* 10pcs/box

Colors used for medium skin tones. Ideal shade for people with medium skin tones. The most popular color among the BB line.



**No.3 Deep**  
8ml \* 10pcs/box

Colors used for brown or bronze-tanned skin tones. Ideal shade for people with tanned skin or bronze skin tones.



**No.3-2 Deep Plus**  
8ml \* 10pcs/box

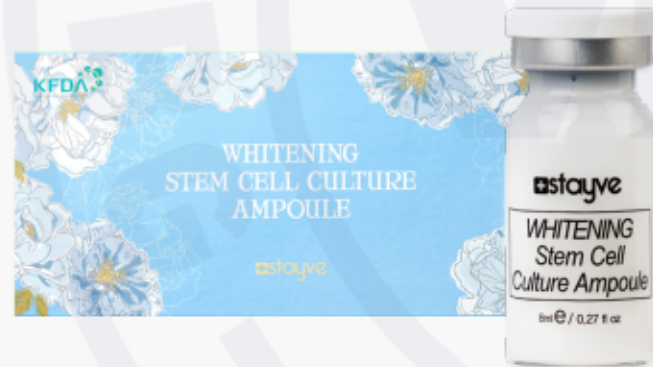
Colors used for the darker skin tones. Ideal shade for people with deep skin tones.



# STAYVE Booster Ampoule

## 01. Stayve Whitening Stem Cell Culture Ampoule 8ml \* 10pcs/box

The Whitening Stem Cell Culture Ampoule contains various plant stem cell cultures that improve skin elasticity and reducing wrinkles. It also contains Niacinamide which is certified by KFDA that brightens the skin and makes dull skin clear and healthy.



## 02. Stayve Aqua Stem Cell Culture Ampoule 8ml \* 10pcs/box

The Aqua Stem Cell Culture Ampoule contains various plant extracts that moisturize dry skin. In addition to fortifying the skin's moisture barrier, hyaluronic acid provides moisture deep into the skin, acting as both moisturizer and humectant.



The Stayve Booster Ampoule can be used before BB Glow treatments to enhance treatment results. It can also be used on its own, without BB Glow treatment afterward. We offer various booster ampoules for different skin types. They are designed to target specific needs such as acne treatment, brightening, moisturizing and anti-aging.



## 03. Stayve Peptide Gold Ampoule 8ml \* 10pcs/box

The Peptide Gold Ampoule contains 99.9% pure gold and 10 different peptides such as niacinamide and adenosine. Niacinamide helps to brighten the skin tone and Adenosine helps for anti-aging such as preventing wrinkles.



## 04. Stayve Salmon DNA Gold Ampoule 8ml \* 10pcs/box

The Salmon DNA Gold Ampoule contains peptides and PDRN extracted from salmon's seminal glands. Peptides are effective for anti-wrinkle and strengthen the skin barrier while PDRN encourages rapid skin regeneration. Niacinamide and 99.9% pure gold powder brighten and clear the skin.



## 05. Stayve AC Stem Cell Gold Ampoule 8ml \* 10pcs/box

The AC Stem Cell Gold Ampoule is ideal for acne-prone skin. It contains Asiatic pennywort extract that is an ingredient proven to fight acne and infections. It also contains 99.9% pure gold powder and acetyl hexapeptide-8 to help anti-wrinkle.







### 06. Stayve Hyaluronic Acid Ampoule 8ml \* 10pcs/box

Hyaluronic Acid Ampoule contains Sodium Hyaluronate as the main ingredient to fill the skin tissues with moisture thoroughly and helps to improve moisturizing power. It also contains other ingredients such as Acetyl Hexapeptide-8 and Palmitoyl Tripeptide-1 which strengthens skin firmness and reduces wrinkles as well.



### 07. Stayve Microbiome Ampoule 8ml \* 10pcs/box

Microbiome Ampoule contains Bifida Ferment Lysate as the main ingredient which improves skin's immunity and reduces the hypersensitive reactions of the skin. It also contains other ingredients such as Lactobacillus / Soybean Ferment Extract that has excellent moisturizing power and Vaccinium Vitis-Idaea Fruit Extract to whiten and give vitality to the skin.



### 08. Stayve Citron & Calendula Ampoule 8ml \* 10pcs/box

Citron & Calendula Ampoule contains Calendula Officinalis Flower as the main ingredient which is well known as Queen of skin calming. It helps to calm and soothe sensitive skin such as dry or chapped skin, and also ideal for troubled skin as it helps inhibition of inflammation and strengthening skin tissue to heal wounds. It also contains other ingredients such as Citrus Limon Peel Oil that is ideal for oily and troubled skin by cleaning the skin.



### 09. Stayve Idebenone Ampoule 8ml \* 10pcs/box

Idebenone Ampoule contains Hydroxydecyl Ubiquinone as the main ingredient which is also known as Idebenone and the strongest anti-aging substance. It helps anti-aging and firming your skin. It is 4 times more powerful effects than Vitamin C and 10 times more powerful effects than Coenzyme Q10. It also contains other ingredients such as Allantoin and Hippophae Rhamnoides Fruit Extract to smoothen your skin and nourishing the skin.



### 10. Stayve Collagen Ampoule 8ml \* 10pcs/box

Collagen Ampoule contains Hydrolyzed Collagen as the main ingredient which is ideal for firming the skin and anti-wrinkle. It has high protein content to make your skin firm and build skin film to moisturize the skin by holding the moisture. It also contains other ingredients such as Tocopheryl Acetate and Vitis Vinifera (Grape) Callus Culture Extract which work as antioxidants that are ideal for aging skin and prevent moisture evaporation by balancing skin lipids.



# STAYVE KIT



## Stayve BB Glow Starter Kit

No.1 \* 3pcs / No.1-2 \* 2pcs

No.2 \* 5pcs / No.3 \* 2pcs

8ml \* 12pcs /box

Stayve BB Glow Starter kit presents 4types of different shades bb ampoule with only one kit. By trying a variety of shades, you can find the most suitable shades for your skin. It is ideal for beginners or academy students as you can pick and choose a variety of shades from the box offers. (No.3-2 Deep Plus is excluded.)



## Stayve Booster Starter Kit

Whitening \* 3pcs / Aqua \* 3pcs

Peptide Gold \* 2pcs / AC Gold \* 2pcs

Salmon DNA Gold \* 2pcs

8ml \* 12pcs /box

Stayve Booster Ampoule can be used before BB Glow treatments to enhance treatment results. It can also be used on its own, without BB Glow treatment afterward. We offer various booster ampoules for different skin types. They are designed to target specific needs such as acne treatment, brightening, moisturizing and anti-aging.



## Stayve Booster Starter Kit II

Collagen \* 3pcs / Idebenone \* 3pcs

Hyaluronic Acid \* 2pcs / Microbiome \* 2pcs

Citron & Calendula \* 2pcs

8ml \* 12pcs /box

Stayve Booster Starter Kit II includes 5 new different types of booster ampoules. This assortment of ampoules makes it convenient to teach students in beauty academies. They are designed to target specific needs such as moisturizing, brightening, anti-aging and increase skin immunity.



## Stayve Customized Kit

Preferred Ampoule \* 12pcs

8ml \* 12pcs /box

Stayve Customized Kit can be designed with the ampoules according to each's preference. The kit will be filled with the chosen ampoule that is most suitable for each's skin type. The customized kit contains total a 12 of vials of ampoules, when a quantity and types of ampoules are chosen among total a 15 types of ampoules such as BB ampoules and Booster ampoules, Stayve presents self-made customized kits to you.



# STAYVE

## SKINCARE PRODUCT FOR PRE-TREATMENT AND POST-TREATMENT



**Stayve Hydrating Rose Toner**  
Capacity: 290ml

Stayve Hydrating Rose Toner calms your skin stimulated by the outside and moist your skin with rich moisture components. It contains Rosa Damascena Flower Water that can be used for all skin types and provide moisture on the skin to repair the balance. It also firms your skin to help anti-wrinkles and helps to remove unnecessary components in the skin.



**Stayve Mild Cleansing Milk**  
Capacity: 290ml

Stayve Mild Cleansing Milk helps to remove thick makeup easily while giving a soft texture on the face with comfort without skin stimulus. It contains Ethylhexyl Palmitate, which works as a skin softener, that moisturizes the skin and provides sheen. It also contains Isopropyl Myristate to protect the skin and calms your skin.



**Stayve Repair Cream For Face And Body**  
Capacity: 1g \* 100pcs/box

Apply the Repair Cream for Face and Body to accelerate skin regeneration and alleviate dull, dry skin. It immediately soothes sensitivity tenderness post BB glow or laser treatments. Apply every morning and night after cleansing the face for three to seven days.



**Stayve Exfoliating Gel**  
Capacity: 290ml

Use Stayve Exfoliating Gel and Neutralising Foam to remove dead skin cells before a BB glow treatment to greatly enhance treatment results. The Mandelic Acid present in the gel gently removes dead skin in a nonabrasive manner. The Stayve Exfoliating Gel is specifically designed for microneedling.



**Stayve Neutralising Foam**  
Capacity: 150ml

The Stayve Neutralising Foam gently neutralizes skin that has become acidic after exfoliating. Massage the face with this fragrant, foamy neutralizer for about three minutes. Balancing the PH level of the skin creates the optimal skin condition for BB glow treatments.





# STAYVE TREATMENT INSTRUCTIONS



## STEP 01

Cleanse the face thoroughly by using Mild Cleansing Milk.

## STEP 02

Lightly apply Rose toner on the face with a cotton pad.

## STEP 03

Using a brush, apply a thick layer of the exfoliating gel. The MTS treatment is more effective after exfoliating. It is not recommended to use any other exfoliating gel besides the one include in the MTS treatment.

Dry skin: 2 minutes  
Normal skin: 3 minutes  
Oily skin: 5 minutes

The exfoliating gel's acidity may cause slight tingling on sensitive skin.

## STEP 04

Wash face or wipe with a damp towel or sponge.

## STEP 05

Apply the neutralizing foam with a brush. This foam lowers acidity caused by the exfoliating gel. Use hands to gently massage the face for 3 minutes. Wash face or wipe with a damp towel or sponge.

## STEP 06

Begin the MTS treatment (2-3 minutes) after applying the booster ampoule. The booster ampoule comes in various types to meet your skin's needs: Acne, Salmon, Peptide Gold, Whitening, Aqua, Citron & Calendula, Hyaluronic acid, Microbiome, Idebenone and Collagen. Regular BB ampoule can be applied instead of the booster, but the booster ampoule is more effective when used before BB Glow treatment.

## STEP 07

Begin the MTS treatment (2-3 minutes) after applying the BB Glow ampoule.

## STEP 08

Apply a mask pack or modeling pack to reduce irritation. You can also use the Omega Light machine for 10-15 minutes. This step can be skipped if you don't have the machine.

## STEP 09

After remove mask pack, spray the Rose Toner and pat the face softly to absorb the remaining BB ampoule into the skin. After finish this step, apply the Stayve Repair Cream.

## STEP 10

For aftercare, use Stayve Repair Cream every day after cleansing. We also recommend applying booster ampoules at home to provide nutrients and maximize effectiveness.



# MISSMITO MACHINE

Component:

1 of Hand-piece | 1 of Adapter | 3 pieces of MTS needles

There are 2 kinds of Missmito, wired and wireless.

The Missmito Machine is used for BB Glow treatments and micro-pigmentation. The curved design and lightweight of the machine provide a perfect grip feeling. It has 8/ 9 different speeds that can be adjusted to provide the best treatment with the suitable speed of the needle. The needle length can be adjusted from 0.5mm to 0.8mm by twisting the machine to find the suitable length for the treatment while consulting with the client. Wireless Missmito machine's max speed is at level 8 and wired Missmito's max speed is at level 9.



## Advantages of Wireless Missmito

- Handy and comfortable free from wire.
- No limitation at place



## Advantages of Wired Missmito

- More powerful than the wireless machine (since it directly outputs the electricity)
- No need to charge the machine

## Cautions in use

- It is not recommended to use over with a voltage higher than 220V (Recommended to use adaptor in case of using 110V)

# MISSMITO MTS NEEDLE

Component:

15 pieces of plastic needle  
0.5mm length

For the Missmito MTS needle, the number of needle projections is 37, and the length of needle is from 0.5mm to 0.8mm as it can be adjusted by twisting Missmito machine. It is ideal for people who are allergic to iron as it gives the same effect as a metal needle.



## OTHER TYPES OF MISSMITO NEEDLE

- 1 Prong Micro / 1 Prong :**  
 These needles have only one needle  
 1Micro: Suitable for delicate procedures  
 1 Prong: Suitable for eyeliner semi-permanent makeup treatment
- 2 Prong Flat / 4 Prong Flat :**  
 These needles are used on lip semi-permanent makeup  
 2 Prong Flat: Suitable for the delicate procedure  
 4 Prong Flat: Suitable for a spacious area
- 3 Prong Round / 5 Prong Round :**  
 These needles are used on eyebrows semi-permanent makeup  
 3 Prong Round: This forms a triangular shape  
 5 Prong Round: This forms a circle shape and used on a spacious area
- 5 Prong Slope :**  
 This needle is used on eyebrow embroy methods with a machine  
 5 Prong Slope: This forms a sloped shape



## LENGTH OF NEEDLES AND OTHER BASIC INFORMATION

### BOOSTER ONLY

If you decide to do Booster treatment only, you can. In this case, you can use a longer needle length between 0.2mm~ 1.00mm... If the length of the needle is around 1.00mm, make sure to apply anesthesia cream on the face before the procedure. Indeed, you have to note that it can cause more pain than a shorter needle and make sure that the client is not bleeding and does not reach out to blood vessels.

### BB ONLY

If you want to skip the Booster and do the BB procedure only you can. But in the case of BBGlow, only short needles such as nano-needles or middle length of needles are recommended.

### BOOSTER AND BB

If you want to do Booster and BB both, the Booster procedure must be done first before BB procedure. Booster procedure will make your skin in the best condition for the BB procedure. Also, if doing the BB and Booster in a session, then it can irritate the skin than the other option, so prefer to doing the procedure with nano or middle length of needles, not long needles.

## HOW TO USE NUMBING CREAM

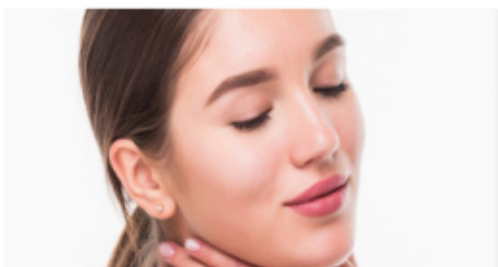


Recommend to apply the numbing cream when using with long needles.



When apply the numbing cream, use a brush to apply a thick layer on the face and avoid areas around the nose and the mouth and place plastic wrap over the face. Leave the numbing cream for 20-30 minutes and wipe off completely before beginning the MTS procedure.

## AFTER CARE



Depending on the skin's condition, refrain from using the sauna or tanning for four to seven days. The skin may get dry after the treatment, so apply the repair cream to moisturize the skin. When you go out, make sure to use sunscreen.





# PRODUCTS FOR LIPS

## Cherips

### Micro Needling Thrapy System (MTS) Ampoule Set for Lip

The Cherips is a lip version of BB ampoule and not a semi-permanent product. Components of Cherips is 5 of lip colors, Booster for Lips and After Treatment 30ml per pcs



### Booster for lips

Before do the procedure with Cherips, the Booster helps for smooth lip surface and voluminous lips.



### After Treatment

It may be dry after the procedure so moisturized is the most important thing. These ampoules help to keep the moisturizing.

## LIP COLORS

### Micro Needling Thrapy System (MTS) Ampoule Set for Lip



#1 Burgundy



#2 Red



#3 Orange Red



#4 Hot Pink



#5 Pink



# CHERIPS TREATMENT INSTRUCTIONS

### Step 1

Use a cotton swab to spread Booster evenly.

### Step 2

Exfoliate and disinfect chapped lips (Exfoliate from 30 seconds to 1 minute)

### Step 3

Remove the remaining with a wet cotton pad.

### Step 4

Shake the products for 30 seconds to mix lip ampoule well and put on a pigment cup.

### Step 5

Spread the ampoule evenly on lips with a cotton swab.

### Step 6

Start the treatment with a machine. This procedure takes about 2~3minutes.

(Optional: If the color is uneven, instead of removing it immediately, reapply the ampoule and repeat the procedure on an uneven spot)

### Step 7

Reapply the ampoule evenly and leave for 5 minutes.

### Step 8

After treatment, wipe the remaining ampoule on the lips with a wet cotton pad.

### Step 9

Apply "After Treatment" to finish.