

# SAFELY FORMULATED FOR YOUR DELICATE SKIN **Dr.esthé**

Specialized Hypoallergenic Prescription for Sensitized Skin  
after Dermatology Treatment

Официальный дистрибьютор  
ООО ВБГ Косметик  
[www.vbg-cosmetic.ru](http://www.vbg-cosmetic.ru)

# Specialized Hypoallergenic Prescription for Sensitized Skin after Dermatology

## Medical Cosmetics Based on Scientific Studies

Dr.esthé is a professional cosmetics brand created with the help of 100 Korean dermatologists who engaged in all processes from product design to research and development. We have excluded as many artificial ingredients and additives as possible, allowing us to create hypoallergenic products made of non-synthetic pigments and non-synthetic fragrances to enhance skin affinity and suitability.

### 화학적 성분 배제 | Non - Added

Dr.esthé excludes as many artificial chemical ingredients as possible, such as artificial fragrances, artificial colors, parabens, benzophenone, mineral oils, ethanol, and triethanolamine.

### 피부과 전문의 테스트 완료 | Dermatologically Tested

To ensure safety for everyone even with sensitive skin, Dr.esthé products are dermatologically tested.

### 독자적 소재 연구개발 | Research & Development

We constantly research and develop various technologies, including DMC™, to guarantee excellence in level of quality in production.

## Reaching Customers Worldwide

Dr.esthé is currently exporting to 11 countries worldwide, and growing into a global dermatological cosmetics brand.



# Dr.esthé | Product Line by Skin Type

● AC Care ● Moisturizing ● Repair ● Brightening ● UV Care ● Scalp Care ● Esthetic

Category	Cleanser		Skin Care			Intensive Care	Intensive Care
	Cleansing	Deep Cleanse & Exfoliation	Toner	Lotion & Serum	Cream		
<b>Sensitive Skin</b>	● Post Cleansing Gel	● Skin Refining Goat Milk Peel	● Skin Laser Solution ● Skin Laser Toner	● Dual Barrier Lotion	● Aqua Infusion Water Drop ● Dual Barrier Cream ● Cica Pepita Cream	● Skin Solution Mask (Soothing) ● Soothing & Moisture Mask ● Azulene Relief Solution Ampoule	● Sun Protection Cream SPF50+/PA+++ ● Pepta BB Cream SPF37/PA+++
<b>Post Treatment</b>	● Post Cleansing Gel	● Skin Refining Goat Milk Peel	● Skin Laser Solution ● Skin Laser Toner	● Aloe Soothing Gel ● EGF Spot Recovery	● Aqua Infusion Water Drop ● Madecassona Repair Cream ● Cica Pepita Cream	● Skin Solution Mask (Soothing) ● Soothing & Moisture Mask ● M.G.F. Renewal Solution Ampoule	● Sun Protection Cream SPF50+/PA+++ ● Pepta BB Cream SPF37/PA+++
<b>Oily, Troubled Skin</b>	● AC Control Mousse Cleanser ● Enzyme Deep Clear Powder Wash	● Skin Refining Goat Milk Peel	● AC Solution ● A2 Solution	● Whitening A Serum ● AC Serum	● AC Soothing Cream ● Aqua Infusion Water Drop	● Skin Solution Mask (Soothing) ● Azulene Relief Solution Ampoule	● Sun Protection Mild SPF50+/PA+++ ● Pepta BB Cream SPF37/PA+++
<b>Dry Skin</b>	● Post Cleansing Gel	● Skin Refining Goat Milk Peel	● Skin Laser Solution ● Skin Laser Toner	● Dual Barrier	● Aqua Infusion Water Drop ● Dual Barrier Cream ● Madecassona Repair Cream ● Cica Pepita Cream	● Soothing & Moisture Mask ● Hyal-Moisture Solution Ampoule	● Sun Protection Cream SPF50+/PA+++ ● Pepta BB Cream SPF37/PA+++
<b>Dull Skin</b>	● Post Cleansing Gel	● Skin Refining Goat Milk Peel	● Skin Laser Solution ● Skin Laser Toner	● Whitening A Serum ● Dual Barrier Lotion	● Dual Barrier Cream ● Cica Pepita Cream	● Vita-C Radiance Solution Ampoule	● UV Protector SPF50+/PA+++ ● Pepta BB Cream SPF37/PA+++
<b>Scalp Care</b>	● Seboric Shampoo ● 50t Shampoo						
<b>Esthetic Line</b>	● Makeup Remover ● Milk Cleanser ● Post Cleansing Gel	● Skin Refining Goat Milk Peel	● Skin Laser Solution ● A2 Solution	● Aloe Soothing Gel ● Jasmine Aroma Collagen Moisturizer ● Jasmine Aroma Collagen Massage Lotion	● Aqua Infusion Water Drop ● Dual Barrier Cream ● Cica Pepita Cream ● Madecassona Repair Cream ● AC Soothing Cream	● Skin Solution Mask (Soothing) ● Soothing & Moisture Mask ● * 4 Types of Solution Ampoule ● Cell-Active DR Booster Solution	● Sun Protection Mild ● Sun Protection Cream ● UV Protector ● Pepta BB Cream

\* 4 Types of Solution Ampoule

[Moisture] Hyal-Moisture Solution Ampoule [Soothing] Azulene Relief Solution Ampoule  
[Repair] M.G.F. Renewal Solution Ampoule [Whitening] Vita-C Radiance Solution Ampoule

# Dr.esthé | Professional Dermatology Program

Program	Cleansing	Steps	Intensive Care	UV Care
<b>Milk Peel Program</b>	● Makeup Remover ● Milk Cleanser ● Post Cleansing Gel	● Skin Refining Goat Milk Peel → LLLT	● Hyal-Moisture Solution Ampoule ● Azulene Relief Solution Ampoule ● M.G.F. Renewal Solution Ampoule ● Vita-C Radiance Solution Ampoule	● Sun Protection Cream SPF50+/PA+++ ● Pepta BB Cream SPF37/PA+++
<b>Milk Toning/Lifting Program</b>	● Makeup Remover ● Milk Cleanser ● Post Cleansing Gel	● Skin Refining Goat Milk Peel → Cleanse (water or towel) → Toning/HIPU → LLLT	● Hyal-Moisture Solution Ampoule ● Azulene Relief Solution Ampoule ● M.G.F. Renewal Solution Ampoule ● Vita-C Radiance Solution Ampoule	● Sun Protection Cream SPF50+/PA+++ ● Pepta BB Cream SPF37/PA+++
<b>Acne Milk Program</b>	● Makeup Remover ● Milk Cleanser ● Post Cleansing Gel	● Skin Refining Goat Milk Peel → Cleanse (water or towel) → Acne Extraction → PDT → LLLT	● Hyal-Moisture Solution Ampoule ● Azulene Relief Solution Ampoule ● M.G.F. Renewal Solution Ampoule ● Vita-C Radiance Solution Ampoule	● Sun Protection Mild SPF50+/PA+++ ● Pepta BB Cream SPF37/PA+++
<b>Dr. Booster Program</b>	● Makeup Remover ● Milk Cleanser ● Post Cleansing Gel	● Pain Relief Cream (Numbing Cream) → Skin Refining Goat Milk Peel → Cleanse (water or towel) → Multi-Hole Treatment* → Dr. Booster	After Dr. Booster → Recommend to Use Penetration Equipment (LDM/Cryo/Ionto)	● Sun Protection Cream SPF50+/PA+++ ● Pepta BB Cream SPF37/PA+++

\*Tools for Multi-Hole Treatment

> Frazel/Intracel Laser, IPL, Needle RF, Toning Laser, Auto MTS, MTS, STAMP, FNS, and etc.



## AC Solution AC 솔루션 30ml

Antibacterial + Anti-Inflammatory + Sebum Control Solution for Acne Treatment

**| Characteristics** The mixture of phytosphingosine, saururus chinensis, persimmon tree leaves, and lavender extracts, effective for oil control, helps to maintain clean and healthy skin, while salicylic acids and azelaic acids help to reduce sebum and skin troubles by removing dead skin cells clogging pores.

**| Ingredients** [Salicylic Acids/Azelaic Acids] Decomposes skin cells to treat acne and impurities in pores, such as dead skin cells and sebum. [Phytosphingosine] Heals wounds, generates collagen, and has antibacterial effect. [Lactic Acid] Naturally occurring acid effective for hydration and emulsification for exfoliation. [Saururus Chinensis, Persimmon Tree Leaves, and Lavender Extracts] Effective for acne treatment.



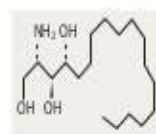
Before  
P.acnes Control



After  
P.acnes AC Solution



Lactic Acid



Phytosphingosine

**| How to Use** After cleansing, apply directly to areas of concern using clean fingertips or cotton swab, and gently pat into skin to treat blemish and skin imperfections. Use morning and night until necessary.



## A2 Solution A2 솔루션 30ml

Sebum Control + Hydrating + Soothing Toner for Oily and Acne-Prone Skin

**| Characteristics** The mixture of chamomile extracts, aloe vera, olive oil, and grapefruit peel extracts helps control excess sebum for oily and acne-prone skin. It helps to smooth skin texture and hydrate skin, leaving skin comfortable and supple. This toner is great especially for rejuvenating tired skin damaged by internal/external environment factors.

**| Ingredients** [Aloe Vera Extracts] Prevents skin from aging, fully moisturizes, and also inhibits melanin production. [Chamomile Extracts] Soothes, regenerates, and protects skin. [Centella Asiatica Extracts] Heals wounds, promotes blood circulation, and prevents fine lines.



**| How to Use** After using AC Solution, apply appropriate amount on the entire face or areas of concern using a cotton pad or fingers, and wait for absorption. Use daily in the morning and night.

## AC 2 SET AC 2종 세트 30ml+30ml



| Includes AC Solution + A2 Solution

| Before & After



| Effects

Through phytosphingosine, saururus chinensis, and lavender extract, it helps to clean pore and effectively control excess sebum, Exfoliant ingredients help to smoothly exfoliate dead skin cells while also care for sebum control, It also contains aloe vera that effectively soothes and moisturizes skin.



### · Dermatologically Tested ·

This is a result of observation of skin irritation in accordance with the international research on dermatitis and KFDA regulations, tested by Ellead Clinical Institution.



\* Tested by 30 Subjects

Tested Product	# of Respondents	30min	24hr	48hr	Average Stimulation
AC Solution	1	0.0	0.5	0.0	0.19
A2 Solution	0	0.0	0.0	0.0	0.0

Result (Grade)	Mean score
No Stimulation (1)	0.00~0.75
Slight Stimulation (2)	0.76~1.50
Light Stimulation (3)	1.51~2.50
Heavy Stimulation (4)	2.51~4.00
Strong Stimulation (5)	4.01~

### Test Result

Both AC Solution and A2 Solution average results show no sign of irritation after 30minutes, 24 hours, and 48 hours.

- Tested Institute: Ellead Co., Ltd.
- Tested Period: 2011.11.25 ~ 2012.01.06
- Tested Subject: 30

## AC Serum AC 세럼 50ml

### Sebum Control + Hydrating Serum for Oily and Acne-Prone Skin

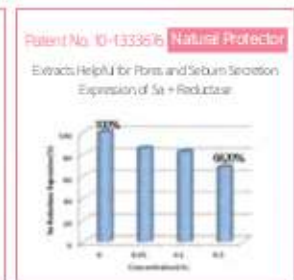
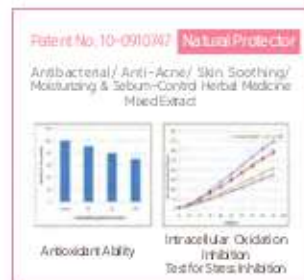


#### | Characteristics

The mixture of wintergreen leaf extract and botanical moisturizing ingredients helps to keep skin hydrated but reduce excessive secretion of sebum to prevent shine. The Pore Away ingredient helps to control over-secreted sebum, soothe skin, and maintain balance between oil-water moisture to keep skin fresh and healthy.

#### | Ingredients

[Aquamoisture] Combination of natural-moisturizer okra, soothing-agent aloe, skin barrier-fortifying linseed, and anti-inflammatory agent burdock has great moisturizing effect.  
 [Anti-Sebum P] Four patented natural extracts help to reduce sebum secretion through the suppression of sebum hormones.  
 [Pore Away] Helps to hydrate and control excessive secretion of sebum.  
 [Natural Protector] Seven medicinal herbal extracts are used as an antibacterial agent that controls and limits production of sebum. (Patent No. 10-0910747)



#### | How to Use

After applying A2 Solution or toner, pump once or twice and gently apply over the entire face. Use daily in the morning and night.

## AC Soothing Cream AC 수딩 크림 60g

### Hydrating + Soothing Cream for Oily and Acne-Prone Skin



#### | Characteristics

This is a non-greasy yet hydrating cream that helps to soothe and soften skin after acne treatment. Made with 100% natural ingredients, the antibacterial and sebum-reducing effects help improve oil-water moisture balance for oily and acne-prone skin.

#### | Ingredients

[Sopholance] 100% natural ingredients (made from fermented wheat and rapeseed oil, Ecocert Certified), effective for antibacterial action and sebum reduction, help to successfully reduce acne (by 59%).  
 - Antibacterial Effect: The MIC (Minimal Inhibitory Concentration) for P. acnes is 0.05%  
 - Sebum Control: Reduces sebum production (by 12%), reduces sebum production speed (by 20%)  
 [Licorice Root Extract] Helps to control sebum production and maintain hydration, thus restoring proper oil-water moisture balance. This is a natural active ingredient that has a molecular structure similar to that of testosterone. It can reduce sebum production and offer anti-irritant effect to sensitive and intolerant skin.  
 [Dual Hyaluronate] Dual hydration from high and low molecular weight hyaluronic acids enhance hydration and skin elasticity.  
 - Low Molecular Weight-Hyaluronic Acid: Adds moisture to skin because low molecules (nano size: 15-25nm) penetrate the skin more easily, and it is able to maintain moisture without stickiness.  
 - High Molecular Weight-Hyaluronic Acid: Forms a moisture barrier across the skin, immediately providing hydration and preventing moisture loss.



#### | How to Use

After applying AC Serum or Whitening A Serum, apply an appropriate amount on the entire face and gently massage for absorption. Use morning and night.

## AC Control Mousse Cleanser AC 컨트롤 무스 클렌저 150ml

### Mild Foam Cleanser for Oily and Acne-Prone Skin



**Characteristics** The rich micro lather helps to remove impurities and excess sebum in pores to control skin troubles. The amino acid surfactants minimize skin irritation, which makes it safe for every skin type, especially sensitive skin. It also helps to maintain oil-water moisture balance for healthy and vibrant skin.

**Ingredients** [Salicylic Acids] Decomposes skin cells for effective acne treatment, while removing impurities in pores, such as dead skin cells and sebum.  
 [Aloe Vera Leaf Water] Heals wounds, promotes regeneration of hepatic cells, prevents aging of skin and body, hydrates the skin, and inhibits melanin production.  
 [Tea Tree Leaf Oil] Anti-inflammation and soothing effects.



**Effects** Amino acid & betaine surfactants help to smoothly cleanse skin with a mild cleansing system and leave skin supple without tightness after cleansing. The micro lather thoroughly cleanses impurities through pore massage with sebum-friendly ingredients.

**How to Use** Pump once or twice onto your palm and massage smoothly to remove impurities, and cleanse with lukewarm water.

## SPECIAL CARE FOR OILY & ACNE-PRONE SKIN · RECOMMENDED STEPS



### Acne and PIH Management Process

AC Control Mousse Cleanser → AC Solution → A2 Solution →  
 AC Serum OR Whitening A Serum → AC Soothing Cream → Sun Protection Mild



## Enzyme Deep Clear Powder Wash 엔자임 딥 클리어 파우더 워시 50g Protein-Decomposing Enzyme Deep Cleansing Powder Wash for All Skin

**| Characteristics** Contains papaya and corn starch to remove impurities and dead skin cells for clear skin. This light powder cleanser with amino acid surfactant base is safe for sensitive skin and leaves skin supple for a long period of time.  
[Powder] Great for exfoliating and sebum control for sensitive skin.  
[Moist] Slightly acidic oil-free cleanser for smooth and supple skin.

**| Ingredients**  
[Corn Starch] Extracted from albumen of corn kernels, effectively absorbs impurities and removes sebum.  
[Papaya Extract] Great for removing dead skin cells. This pure, non-toxic natural ingredient leaves skin smooth and hydrated.  
[Allantoin] Great for healing skin. This ingredient provides soothing and relieving sensation to help skin become healthier and softer.



**| Effects** The enzymes work smoothly on skin to remove makeup residues and impurities in pores to help maintain clean skin. This water-soluble powder gently scrubs the skin and melts away sebum for smooth skin texture. This mildly acidic cleanser leaves skin comfortable after cleansing and the natural moisturizing factors leave skin supple for a long time.

Before & After Using  
Enzyme Deep Clear Powder Wash



**| How to Use**  
As a cleanser : Place an appropriate amount onto your palm and add multiple drops of water to create micro bubbles. Gently massage the entire face avoiding eye and lip area.  
As an exfoliator : Place an appropriate amount onto your palm and add just a few drops of water and gently exfoliate. Avoid eye and lip area.





## Skin Laser Solution / Skin Laser Toner

스킨 레이저 솔루션 30ml / 스킨 레이저 토너 85ml (Mist-Type)

Quickly Soothes + Recovers Sensitive Skin Conditions after Dermatology Treatment



**| Characteristics** This toner, combined with various natural plant extracts including centella asiatica and aloe barbadensis leaf, helps to gently calm tired, stressed skin, while also providing refresh sensation with full moisture to soothe sensitive skin.

**| Ingredients** Oil-free, alcohol-free formula that does not cause irritation.  
 [Panax Ginseng Root Extract] Prevents dry skin, improves in skin energy & skin immunity, and helps maintain healthy skin.  
 [Calendula Officinalis Flower Extract] Helps skin nourish and improves skin condition with botanical active ingredient.  
 [Centella Asiatica Extract] Heals wounds, promotes blood circulation, prevents fine lines, heals burns and wounds, relieves redness and pain, and promotes cell regeneration.  
 [Aloe Barbadensis Leaf] Prevents aging of skin and body, deeply hydrates skin, improves skin elasticity, and soothes flushed skin.



**| How to Use** Skin Laser Solution : After cleansing, apply directly to areas of concern using clean fingertips or cotton swab, and gently pat into skin for soothing. Use daily in the morning and night.  
 Skin Laser Toner : On clean face, hold the toner 20~30cm away from the face and spray it once or twice, or as much needed. Use frequently.

## EGF Spot Recovery EGF 스팟 리커버리 15ml

Spot Treatment to Regenerate Skin Cells and Relieve Inflammation after Dermatology Treatment



**| Characteristics** Contains CG-EGF (10ppm) 15mg  
 Protects the wounded areas after laser or acne treatment to prevent scars and pigmentation.  
 EGF and centella asiatica help with cell regeneration and to heal wounds.

**| Ingredients** Contains major ingredients that prevent scars and pigmentation, and promote cell regeneration.  
 [EGF (Epidermal Growth Factor)] Protein that consists of 53 amino acids, It is a great regenerating ingredient that promotes cell proliferation.  
 [Centella Asiatica Extracts] Great for healing wounds, promoting blood circulation, and preventing fine lines.

### How EGF Works in Cells ?



#### Effects of EGF

EGF is found in high concentration in saliva, urine, breast milk, tears, and blood. It is supplied from blood in case of injury to heal wounds without scars. It also promotes cell proliferation in epithelial and endothelial cells and proliferates fibroblasts that synthesize collagen, a component of corium.



#### Effects of Centella Asiatica, a Miraculous Plant from Madagascar

Centella Asiatica is praised for its ability to make new blood tissues to strengthen the immune system by regenerating skin tissues and strengthening capillary vessels and blood tissues. It also supplies nutrition to cell and protein synthesis while promoting collagen secretion.

**| How to Use** Apply directly to areas of concern using clean fingertips or cotton swab, and gently massage for absorption. For best results, reapply throughout the day.

## Cica Pepta Cream 시카 펩타 크림 50g

Repairing Cream, Rich in Peptide, to Help Recover Damaged Skin after Dermatology Treatment



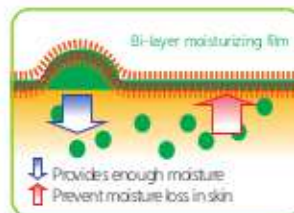
### | Characteristics

This peptide cream is specifically made to be use after dermatology treatment which helps to restore and protect weakened skin barrier by forming a thin bi-layer moisturizing film. The regenerative layer containing the basement membrane peptide helps to recover the damage of the basement membrane, and restore not only the epidermis but also the dermis. In addition, the hypoallergenic Amino Acid Gel Network accelerates the recovery of epidermis and dermis by creating a moist skin environment. It protects the skin from harmful external factors and keeps the skin hydrated.

### | Ingredients

#### What are Peptides?

It is the same type of protein ingredient as our body and it is excellent for improving wrinkles, moisturizing, and treating damaged skin. Because these particles are so small, it is able to effectively penetrate deep into the skin. It is a scientifically proven active mechanism that has almost no sign of toxicity, irritation, and side effects.



#### 8 Types of Peptides

- [Palmitoyl Pentapeptide -4] Stimulates elastin and collagen production, accelerates hydration.
- [Nonapeptide - 1] Enhances skin tone by preventing melanin formation.
- [Acetyl Hexapeptide - 8] Prevents aging, reduces wrinkles, increases skin elasticity.
- [Copper Tripeptide - 1] Effective for skin regeneration.
- [Tripeptide-1] Effective for collagen production, skin elasticity, and prevents aging.
- [Palmitoyl Tetrapeptide - 7] Protects skin, stimulates cell growth.
- [Palmitoyl Tripeptide - 1] Effective for collagen production, recovery of damaged tissues.
- [Hexapeptide - 9] Restores skin elasticity, heals wounds.

### | How to Use

Gently apply over the affected area. After dermatology treatment, it is recommended to reapply more than once in the morning and night for a full week. For tired and sensitive skin, use daily for quick improvement.

## Rejuvenating Ampoule 리쥬비네이팅 앰플 30ml

Revitalize + Refresh Dull Skin with Vital Rejuvenating Ingredient, PDRN



### | Characteristics

This is a highly concentrated, milky textured ampoule that contains PDRN, which forms glossy aqua barriers to give radiant shine and help skin become healthier and revitalized. With the key ingredient of PDRN, this ampoule will help skin drench in moisture and maximize rejuvenating effect.

### | Ingredients

- [Propolis Extract] Increases skin protection, calms skin from external environment.
- [PDRN] As DNA fragments extracted from salmon, it helps to regenerate skin cells and reduce scars. It is already being used in Europe as part of medicine to renew body tissues such as ligaments, tendons and skin. And in Korea, it has been used as a special medicine to heal wounds and to regenerate tissues after surgery.
- [Betaine] Helps to maintain oil - water moisture balance, and to prevent wrinkles & uneven pigmentation.
- [Glyceryl Stearate] Originated from coconut fruit and soybean oil, it helps to fortify skin barrier and hydrate skin surface.

### | Effects



### | How to Use

Pump once or twice and gently apply over the entire face. Use as part of night time skin care routine.

## Madecassona Repair Cream 마데카소나 리페어 크림 50ml

Regenerates the Outer Layer of Damaged Skin and Corrects Wrinkles



Anti-Wrinkle Effect

### | Characteristics

Contains Madecassoside of 3000ppm  
 Madecassoside, an amazing natural regenerating ingredient extracted through advanced refining technology, regenerates skin after various dermatology treatments. This repair cream also includes hydrating ingredients such as ceramide and hyaluronic acids that provide rich nutrients and moisture to help correct wrinkles & fine lines.

### | Ingredients

[Madecassoside] Extracted from centella asiatica, it is great for healing wounds, promoting blood circulation, and reducing fine lines.

[Ceramide] A major component of stratum corneum, forms and retains the lipid barrier.

- 1) Strengthens intercellular bonding for resilience and hydration.
- 2) Forms protective barrier and prevents moisture loss.
- 3) Antibacterial action against microbes.
- 4) Controls skin growth and differentiation.
- 5) Inhibits skin inflammation and cell proliferation.

[Cholesterol] As an intermediate formation of Vitamin D3, it improves the permeability of intercellular lipids in the stratum corneum for resilience, pore-tightening, and wrinkle correction.

[Tocopheryl Acetate] Derived from Vitamine E, it prevents skin damage caused by oxygen free radicals and increases moisture retention in the stratum corneum with powerful antioxidants.



#### [Refresh Hydro Capsule™ (RHC™) Method]

Various active ingredients are encapsulated to burst nutrients and moisture upon application for powerful hydration and effective penetration.

### | How to Use

Pump once or twice and gently apply over the entire face.  
 For best results, reapply throughout the day to the areas of concern.

## Before & After Results of Dr. esthé's Main Products

Before & After  
Using AC Solution



Before

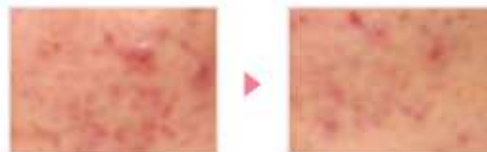
After



Before

After 10 Days

Before & After  
Using Enzyme Deep Clear Powder Wash



Before

After

Before & After  
Using Whitening A Serum



Before

After

## Skin Solution Mask [Soothing] 스킨 솔루션 마스크 20ml

### Sheet Mask to Soothe + Alleviate Hot Flashes after Treatment



Alleviating Redness and Soothing Effect

**| Characteristics** This dermatological sheet mask helps to soothe irritated skin and alleviate hot flashes, helping skin to be in a relaxed state after dermatology treatment. This essence is rich in ingredients effective for soothing, such as aloe vera leaf extract, centella asiatica extract, and allantoin.

**| Ingredients** [Allantoin] Found in wheat germules, it has healing, anti-inflammatory, soothing, and hypoallergenic effect. With its excellent soothing ability, it promotes the growth of new tissue and cures damaged skin.

[Centella Asiatica Extract] Commonly known as centella, this plant is an important active ingredient in Madecassona Ointment. The triterpenoids in this extract strengthens skin and helps to recover the concentration of antioxidants. Saponin enhances the formation of collagen, thereby accelerating regeneration of damaged skin.

[Panthenol] As an effective vitamin for skin regeneration, it turns into pantothenic acid (vitamin B5), which promotes cellular growth as well as water retention, helping to heal wounds, regenerate cells, and boost the immune system.

[Green Tea Extract] The flavonoid content in the extract eliminates harmful active oxygen in skin and prevents aging. It also has antibacterial and anti-inflammatory effects.

[Aloe Vera Leaf Extract] It has antibacterial, antiviral, antiulcer, antiallergic, and anti-inflammatory capacities that aid in healing, anti-aging, moisturizing, and preventing melanin formation.



**| How to Use** After cleansing, apply sheet mask evenly onto the face and wait 10 to 20 minutes. After removing the sheet mask, gently pat the remaining essence for absorption.

## Soothing & Moisture Mask 수딩 앤 모이스처 마스크 30ml

### Sheet Mask to Purify + Soothe + Fully Moisturize Sensitive Skin Daily



Soothing & Moisturizing Effect

**| Characteristics** Moringa acts as a "natural water purifier" to cleanse skin surface from fine dust and pollution which helps to maximize soothing and moisturizing effects. Its natural cellulose sheet is safe and gentle to be used daily without causing irritation. This sheet mask is unique in that it holds abundant amount of essence to help skin become relaxed and completely hydrated as fast and fully as possible.

**| Ingredients** [Moringa Seed Extract] Helps to purify skin through its natural anti-pollution effect. [Aloe Barbadensis Leaf Extract, Fraxinus Rhynchophylla Extract, Ocimum Basilicum (Basil) Flower/Leaf/Stem Extract] Quickly soothes sensitive, irritated skin, and helps to be in a relaxed condition.

[Sodium Hyaluronate] Rich, natural moisturizing factor.



**| Effects** Moringa seed extract's strong purifying action helps to absorb fine dust from external environment, creating a clean surface for the skin to absorb as much calming and moisturizing ingredients effectively, making skin healthier.

**| How to Use** After cleansing, apply sheet mask evenly onto the face and wait 15 to 20 minutes. After removing the sheet mask, gently pat the remaining essence for absorption.

# Dual Barrier Lotion/Cream 듀얼 베리어 로션 200g / 크림 100g

Non-Irritating + Highly Moisturizing Cream & Lotion for Sensitive, Intolerant Skin

## | Characteristics



1. DMC™ patented technology helps to recover and enhance skin barrier.

Highly moisturizing cream and lotion helps to enhance skin barrier and leave skin supple even for extremely dry skin. It contains the lipid complex DMC™, which is similar to lipids in skin and it supplies the lipid complex to damage barrier for enhancement.

**Dermatology Matese-Cross™ (DMC™)**

Personalized formula for a healthy skin barrier, Dermatology Matese-Cross™ (DMC™) The structure of keratinocytes and intercellular lipids takes the form of a skin barrier that looks similar to a brick wall. Dr. esthé Dermatology Matese-Cross™ has a structure similar to that of Matese cross of intercellular lipids. It minimizes the loss of TEWL to retain moisture for a long time for healthier skin.

2. Dual hyaluronic acids provide moisture to both inside and outside of skin

Dual hyaluronic acids leave skin supple and glowing. They fill both the inside and cover the outside of skin with full moisture.

**Filling Inside with Moisture IN**

**Hydrolyzed Hyaluronic Acid**  
Low molecular weight hyaluronic acid (Hydrolyzed Hyaluronic Acid) (nano size: 15~25nm) penetrates skin and continues to hold moisture.

**Covering Outside with a Moisture Barrier OUT**

**Sodium Hyaluronate**  
High molecular weight, hyaluronic acid (Sodium Hyaluronate) forms a moisture barrier across the skin, immediately preventing moisture loss.

**Patent Certificate**  
Patent No. 10-1333676

**Penetration of Low and High Hyaluronic Acids**

Dual hydration of low and high hyaluronic acids enhances moisturization and skin elasticity!

The optimized balancing of high hyaluronic acids leads to harmony in moisturizing.

- Vibrant skin : Supplies intensive moisture directly to skin for tightening and hydration
- Hydration with hyaluronic acids : Leaves skin supple and smooth
- Outside hydration : Prevents moisture loss on skin  
-> conserves moisture
- Inside hydration : Adds moisture, enhances skin tightening in the corium, and leaves skin radiant through fundamental skin management
- Supports elastic fibers like collagen and elastin
- Helps maintain skin elasticity

**Before Hydration**

How it works in the epidermis. Forms a moisture barrier (Sodium Hyaluronate)

**After Hydration**

How it works in the corium. Directly supplies moisture to the corium (Hydrolyzed Hyaluronic Acid)



3. Product certified as "Green" by EWG, adequate for intolerant and sensitive skin.

Contains ingredients certified as "Green" by the Environmental Working Group (EWG), safe for intolerant and sensitive skin whose skin barrier has been damaged.

**Hazard Score Key**

Low Hazard

Moderate Hazard

High Hazard

## | How to Use

Apply an appropriate amount on the entire face or areas of concern and gently massage for absorption.

## Aqua Infusion Water Drop 아쿠아 인퓨전 워터 드롭 60ml

Water-Drop Type Moisturizing Cream that Leaves Skin Supple and Healthy without Irritation or Stickiness



### | Characteristics

3,3,3 Features \_ 3 Function, 3 Formula System, 3 Free System

This cream transforms into water drops upon application for effective penetration. It supplies moisture to skin and forms protective barrier to reduce transepidermal water loss, (TEWL)

### | Ingredients

Powerful Anti-Inflammatory Action of DEFENSIL

- [Blue Weed Seed Oil] Powerful anti-inflammatory agent, and protects skin from damage.
- [Balloon Vine Flower/Leaf/Vine Extracts] Relieves itchiness, sting, and inflammation.
- [Sunflower Seed Oil] Contains large amount of vitamin A and E, which are great for soothing skin.
- [Fermented Beta-Glucan] Activates skin immune system to revitalize skin.
- [Jojoba Oil] Similar to collagen with excellent skin friendliness, and inhibits bacteria and trouble, and prevents moisture loss for dry skin.



**3 Function**  
Supplies moisture and forms protective barrier.

**3 Formula System**  
Moisturizer, Humectant, Emollient

**3 Free System**  
Free of Mineral Oil · Tar Color · Paraben

### | How to Use

After applying serum, apply an appropriate amount on the entire face and gently massage for absorption. Use daily in the morning and night.

## Whitening A Serum 화이트닝 A 세럼 50ml

Serum Formulated to Brighten + Enhance Skin Tone + Hydrate + Vitalize Dull & Tired Skin



Whitening Effect

### | Characteristics

This encapsulated liposome serum is highly concentrated with vitamin C, vitamin complex of A, B3, B5, E, and glutathione to help brighten skin complex and enhance skin tone by forming a fitting-barrier.

### | Ingredients

- [Vitamin C] Brightens skin by suppressing melanin production and preventing skin damage, aging and wrinkles by expediting the formation of a collagen layer.
- [Vitamin Complex of A,B3,B5,E] Brightens and moisturizes skin with antioxidant and hydrating effects.
- [Glutathione] As an active ingredient in white jade injection treatment, it eliminates oxygen free radicals as well as other harmful elements, purifying and revitalizing skin while enhancing skin metabolism and cycle.
- [Niacinamide] As an MFDS-approved whitening ingredient, it has many benefits including clarifying skin, improving skin tone, suppressing melanin transfer by stimulating microcirculation in the stratum corneum, and preventing aging by secretion of collagen.
- [Licorice Root Extract] This natural whitening substance offers higher whitening effect than most other natural ingredients. It interferes with the activities of tyrosinase to discourage the synthesis of melanin, helping to brighten, soothe, and hydrate skin.


### | Effects

- Effects Similar to Receiving Professional Facial Treatment
- Moisturization by high-nutrition emollient
  - Helps to optimize oil-water moisture balance
  - Helps with discoloration

### | Before & After



**Direct Water Supplement**



High-concentration micro emulsion forms fitting-barrier on skin: Continuous water retention capacity

### | How to Use

After applying toner, pump once or twice and gently apply over the entire face. Use daily in the morning and night.

## Sun Protection Cream SPF50+/PA+++, 선 프로텍션 크림 50ml

### Moisturizing Sunscreen for Sensitive and Dry Skin after Dermatology Treatment



**| Characteristics** The Direct Water Supplement System (DWS) helps to retain moisture and allows for a smooth texture to cover the entire skin with a protective barrier. This sunscreen protects skin cells from strong UV rays to leave skin supple and prevents photosensitivity.

**| Ingredients** Through Direct Water Supplement System (DWS), it supplies moisture and prevents moisture loss for effective care of dry and sensitive skin after treatment. The long-lasting effect of UV-Cutting helps to evenly spread and apply on the skin without leaving excess white cast, while the double protection of UV-A/B protects skin from various harmful aggressors and UV rays, it also hydrates dry and rough skin by maintaining oil-water moisture balance for supple and smooth skin texture.

#### Direct Water Supplement



#### Long lasting effect of UV Cutting



**| How to Use** At the last step of skin care routine, apply an appropriate amount on the entire face. Reapply throughout the day if needed.

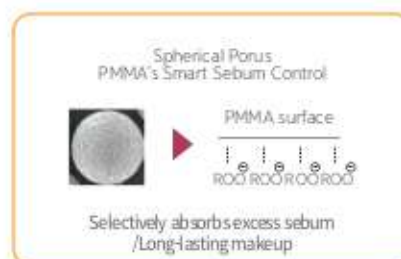
## Sun Protection Mild SPF50+/PA+++, 선 프로텍션 마일드 50ml

### Lightweight Sunscreen for Oily and Acne-Prone Skin



**| Characteristics** The Smart Sebum Control Method (SSC) helps to control sebum and reduce not only irritation, but also excess white cast. In addition, the strong waterproof formula against sweat and sebum offers light texture without stickiness.

**| Ingredients** Through Smart Sebum Control Method(SSC), it effectively helps to absorb excess sebum on oily skin. This is a W/S type that resists sebum and sweat and minimizes excess white cast with micro-particle technology. This is recommended for those who want lightweight and smooth application without sticky texture.



**| Effects** The SSC System helps to absorb excess sebum and the protection provided by the sunscreen is strong against sweat and oil, making it effective for oily and acne-prone skin. This liquid-type sunscreen stays light even when applied in multiple layers.

**| How to Use** At the last step of skin care routine, apply an appropriate amount on the entire face. Reapply throughout the day if needed.



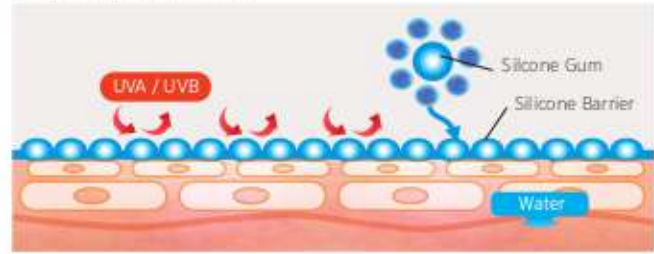
## UV Protector SPF50+ / PA+++ , UV 프로텍터 60ml

Waterproof Sunscreen with Soothing Effect to Protect Skin from Intense UV Rays

**| Characteristics** This UV Protector forms a smooth silicon protective barrier to protect skin from intense UV rays and also provides enhanced photostability to prevent cell damage and pigmentation. The specialized method helps to form optimal emulsified particles to keep skin fresh and free of stickiness even with high sun protection factor of SPF50+/PA+++.

**| Ingredients**  
 [Jojoba Oil] Similar to collagen with excellent skin friendliness, and prevents moisture loss.  
 [Plant-Based Squalane] Penetrates cell membranes for skin respiration and oxygen supply to revitalize cells.  
 [Grapefruit Extract] Skin conditioning for smooth skin surface.  
 [Purslane Extract] Prevents dryness, soothes, and has antibacterial and hydrating effects.  
 [Tomato Extract] Mild on skin, great for brightening and anti-aging.

Silicone Barrier  
(Long Lasting & Water Barrier)



**| How to Use** At the last step of skin care routine, apply an appropriate amount on the entire face. Reapply throughout the day if needed.

## Pepta BB Cream SPF 37/PA+++ , 펩타 BB 크림 50g

BB Cream with 8 Types of Peptides to Help Regenerate + Hydrate Damaged & Sensitive Skin after Dermatology Treatment

**| Characteristics** With effects of 8 different types of peptides, it helps to rejuvenate and tighten skin by fortifying skin barrier. And through the hyper moisturizing effect, not only is this BB cream highly moisturizing and long lasting, but it makes skin glow without excessive shine, stickiness, or oiliness.

**| Ingredients** **What is Peptide?**

It is the same type of protein ingredient as our body and it is excellent for improving wrinkles, moisturizing, and treating damaged skin. Because these particles are so small, it is able to effectively penetrate deep into the skin. It is a scientifically proven active mechanism that has almost no sign of toxicity, irritation and side effects.

**8 Types of Peptides**

- [Palmitoyl Pentapeptide -4] Stimulates elastin and collagen production, recovery of accelerates hydration.
- [Nonapeptide-1] Enhances skin tone by preventing melanin formation.
- [Acetyl Hexapeptide - 8] Prevents aging, reduces wrinkles, increases skin elasticity.
- [Copper Tripeptide -1] Effective for skin regeneration.
- [Tripeptide -1] Effective for collagen production, skin elasticity, and prevents aging
- [Palmitoyl Tetrapeptide -7] Protects skin, stimulates cell growth.
- [Palmitoyl Tripeptide -1] Effective for collagen production, the recovery of damaged tissues.
- [Hexapeptide - 9] Restores skin elasticity, heals wounds.



Anti-Wrinkle + Whitening Effect

**Sodium Hyaluronate** - Excellent Water-Binding Capacity  
 -Skin Tightening Effect  
 -Anti-Wrinkles

Texture High in Nutrients  
 Strong Moisture Energy +  
 Powerful Formation of Moisture Evaporation Barrier

**Moisture Factor**

**Hyper moisturizing effect**

**| How to Use** After applying sunscreen or at the last step of skin care routine, apply an appropriate amount on the entire face. It can also be used as a tinted sunscreen.



## Seboric Shampoo 세보릭 샴푸 130ml

Formulated for Cleansing Oily Scalp with Dandruff and Itchiness



**|Characteristics** The A.I.S.H. System, a stabilization technology formulated with mild active ingredients, helps to recover oily scalp with dandruff and/or itchiness and maintain its health state. The smooth texture of the shampoo minimizes irritation when cleansing.

**|Ingredients**  
 [Zinc Pyrithione] Controls excess sebum secretion and delivers antibacterial action to treat various skin infections such as seborrheic dermatitis, eczema, foot fungus, and vitiligo.  
 [Panthenol (Provit.B5)] Hydrates skin, stimulates skin regeneration, and widely used for anti-inflammation and itchiness control.  
 [Salicylic Acid] Effectively removes and controls impurities and dead skin cells on the scalp.

Compared with typical shampoos, Seboric Shampoo is a slightly acidic with a pH level of 4.5 to prevent irritation.



**A.I.S.H. SYSTEM**

Zinc Pyrithione

Panthenol (ProVit.B5)

Salicylic Acid

Formulated with A.I.S.H. System

Zinc Pyrithione : Purifies scalp through antibacterial effect,

Salicylic Acid : Effectively exfoliates and tightens skin,

ProVitamin B5 : Naturally derived hypoallergenic cleansing ingredient which also helps to protect scalp from over exfoliation.

**|Effects** A.I.S.H. System helps to recover and normalize scalp conditions to maintain healthy hair. The rich conditioning effect with gentle texture not only minimizes damage and irritation, but also prevents dryness and roughness even when used daily.

**|How to Use** For best results, apply the shampoo on damp hair and gently massage the scalp. Wait for 5 minutes, then rinse with water. Use daily if needed.

## 501 Shampoo 501 샴푸 300ml

Helps to Alleviate Hair Loss Symptoms & Improve Scalp Conditions



**|Characteristics** 501 Shampoo contains active ingredients that help to effectively alleviate hair loss symptoms, and also contains HY Protein-Complex(H) which helps to improve scalp conditions, resulting in shiny and healthy hair.

**|Ingredients**  
 [Niacinamide] Helps to treat hair loss by increasing blood flow to induce hair growth.  
 [Zinc Pyrithione] Helps to relieve itching and get rid of dandruff.  
 [Panthenol] Helps to effectively condition and make hair shiny.  
 [Biotin] Provides excellent nutrients that help to prevent hair loss.

**|Effects** **What is HY Protein-Complex (H)?**  
 HY Protein-Complex(H) is a combination of proteins extracted from natural plants especially high in protein content such as potatoes, soy, carrots, rice, and corns. Through all the rich nutrients, it helps to promote healthy hair growth by strengthening and hydrating damaged hair.



Formulated to Alleviate Hair Loss Symptoms

**|How to Use** For best results, apply the shampoo on damp hair and gently massage the scalp. Wait for 3 minutes, then rinse with water.



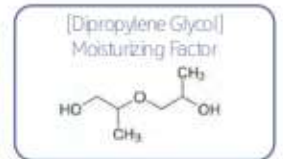
## Makeup Remover 메이크업 리무버 1000ml

### Mild Makeup Remover with EWG Green Grade Extracts

**| Characteristics** Safe for sensitive skin, EWG green-grade extracts and dipropylene glycol help to enhance skin moisture to prevent dry skin. Rice extract also keeps skin smooth and moisturized even after cleansing. This makeup remover not only removes makeup and impurities, but also helps to brighten skin tone for healthier skin.

**| Ingredients** [Angelica Archangelica Leaf Extract, Oenothera Javanica Extract, Celery Extract, Rice Extract, Cabbage Extract, Artemisia Vulgaris Extract, Tomato Extract] 7 organic extracts that help purify and fully moisturize skin.

[Houttuynia Cordata Extract, Larix Sibirica Wood Extract, Rheum Palmatum Root Extract, Honeysuckle Flower Extract] 4 natural plant extracts rich in nutrients healthy for skin.



**| Effects** [Dipropylene Glycol: Moisturizing Factor] Helps to lock in moisture with its high moisturizing function.

**| How to Use** Pump once or twice onto a cotton pad and gently pat down on areas that need cleansing. Then finish off with a cleanser.



## Post Cleansing Gel 포스트 클렌징 젤 1000ml

### Safe & Gentle Cleansing Gel Formulated for Damaged & Sensitive Skin after Treatment

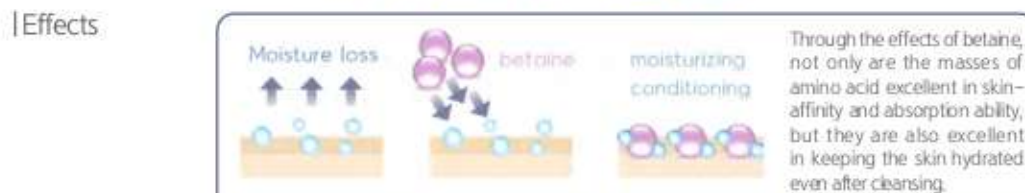
**| Characteristics** This mild gel-type cleanser helps to soothe and moisturize while gently removing impurities of damaged, sensitive skin after dermatology treatment.

**| Ingredients** [Sodium Methyl Cocoyl Taurate (Coconut)] Creates soft foam that can be used on delicate skin, and locks in moisture after cleansing.

[Lavender] Natural essential oil, and calms skin after cleansing.

[Grape, Orange, Apple, Pear, Banana Extracts] 5 fruit extracts that help to brighten skin tone.

[Betaine] Excellent in skin-affinity, absorption ability and great moisturizing factor.



**| How to Use** Pump once or twice, then mix with water to create micro bubbles. Gently massage over the entire face and finish by cleansing with lukewarm water.



## Milk Cleanser 밀크 클렌저 1000ml

Rinse-Free Gentle Cleanser to Moisturize and Protect Sensitive Skin

### | Characteristics

It is a milky textured makeup cleanser that removes makeup residue and impurities without irritating the skin. It is gentle as its pH level is similar to that of the skin to help protect skin from external environment after cleansing.

### | Ingredients

[Centella Asiatica Extract] Increases moisture level, and soothes irritated skin.  
 [Rice Extract] Helps skin recover back to relaxed state, and soften skin.  
 [Olive Oil] Helps to maintain skin's oil-water moisture balance, improve in skin texture, and brighten skin tone.



### | How to Use

Pump once or twice onto a cotton pad and gently massage over the entire face or areas needed. Wipe off with a clean cotton pad or a warm facial towel, if necessary, wash off with water.



## A2 Solution A2 솔루션 1000ml

Sebum Control + Hydrating + Soothing Toner for Oily and Acne-Prone Skin

### | Characteristics

The mixture of chamomile extracts, aloe vera, olive oil, and grapefruit peel extracts helps control excess sebum for oily and acne-prone skin. It helps to smooth skin texture and hydrate skin, leaving skin comfortable and supple. This toner is great especially for rejuvenating tired skin damaged by internal/external environment factors.

### | Ingredients

[Aloe Vera Extracts] Prevents skin from aging, fully moisturizes, and also inhibits melanin production.  
 [Chamomile Extracts] Soothes, regenerates, and protects skin.  
 [Centella Asiatica Extracts] Heals wounds, promotes blood circulation, and prevents fine lines.



### | How to Use

After using AC Solution, apply appropriate amount on the entire face or areas of concern using a cotton pad or fingers, and wait for absorption. Use daily in the morning and night.



## Skin Laser Solution 스킨 레이저 솔루션 1000ml

Quickly Soothes + Recovers Sensitive Skin Conditions after Dermatology Treatment

**| Characteristics** This toner, combined with various natural plant extracts including centella asiatica and aloe barbadensis leaf, helps to gently calm tired, stressed skin, while also providing refresh sensation with full moisture to soothe sensitive skin.

**| Ingredients** Oil-free, alcohol-free formula that does not cause irritation.  
 [Panax Ginseng Root Extract] Prevents dry skin, improves in skin energy & skin immunity, and helps maintain healthy skin.  
 [Calendula Officinalis Flower Extract] Helps skin nourish and improves skin condition with botanical active ingredient.  
 [Centella asiatica extract] Heals wounds, promotes blood circulation, prevents fine lines, heals burns and wounds, relieves redness and pain, and promotes cell regeneration.  
 [Aloe Barbadensis Leaf] Prevents aging of skin and body, deeply hydrates skin, improves skin elasticity, and soothes flushed skin.



**| How to Use** Pump once or twice onto a cotton pad and gently swipe over the entire face or anywhere needed and wait for absorption.



## Aloe Soothing Gel 알로에수딩 젤 1000ml

Aloe Gel with Excellent Soothing Effect (94.6% of Aloe)

**| Characteristics** This aloe gel is rich in aloe ingredient which provides hydration and helps to quickly calm and soothe skin irritated by the sun or external factor. In addition, the cooling factor technology gives fresh and cooling sensation without stickiness.

**| Ingredients** [Aloe Barbadensis Leaf Water] Has high soothing and moisturizing effect and protects skin to become healthier;  
 [Grape, Apple, Orange, Pear, Banana Extracts] 5 fruit extracts that help to brighten skin tone.



**| How to Use** Apply appropriate amount to irritated area and wait for it to absorb fully. It is recommended to keep it cool or in the refrigerator to maximize cooling and soothing.



## Jasmine Aroma Collagen Moisturizer

자스민 아로마 콜라겐 모이스처라이저 1000ml

Skin Elasticity + Moisture + Glow – 3 in 1 Collagen Moisturizer

**| Characteristics** This moisturizer, rich in collagen, also contains natural ingredients such as allantoin to help brighten skin complex, moisturize, and smooth out dry, rough skin by forming moisture barriers.

**| Ingredients** [Allantoin] Natural ingredient that helps to moisturize, improve skin texture, strengthen skin barrier, and calm irritated skin.  
[Avocado Oil, Coconut Oil, Cananga Odorta Flower Oil, Safflower Seed Oil, Evening Prirose Oil] Excellent in skin-affinity, absorption ability, preventing dry skin, and act as great moisturizing factor which help balance pH level.



**| How to Use** After applying toner, pump once or twice and spread evenly on the face, and then massage in circular motion for absorption.



## Jasmine Aroma Collagen Massage Lotion

자스민 아로마 콜라겐 마사지 로션 1000ml

Skin Elasticity + Circulation+ Vitality – 3 in 1 Collagen Massage Lotion

**| Characteristics** This is a gentle, non-irritating massage lotion full of collagen that improves skin elasticity, helps with blood circulation, and provides vitality while helping to maintain oil-water moisture balance of skin.

**| Ingredients** [Collagen, Rosemary Extract, Chrysanthemum Morifolium Flower Extract] Increase and maintain elasticity of skin, and also help with wrinkle care.  
[Olive Oil, Sweet Almond Oil, Avocado Oil, Coconut Oil, Jasmine Oil] Excellent in skin-affinity, absorption ability, preventing dry skin, and act as great moisturizing factor which help balance pH level.



**| How to Use** Use as much needed to smoothly massage the entire face including the neck and decollete area, and let it absorb.



# Skin Refining Goat Milk Peel 스킨 리파이닝 고트밀크 필 150ml

## Quick + Hydrating + Hypoallergenic Gentle Exfoliator for All Skin Types

**| Characteristics** Hypoallergenic and extra moisturizing goat milk peel with the golden ratio of AHA, BHA, and PHA and 7,500ppm of goat milk extract to brighten skin complex,

**| Ingredients**  
[AHA] Gently removes dead skin, moisturizes dry and sensitive skin  
[BHA] Removes sebum and blackheads, excellent for oily and acne-prone skin  
[PHA] Effective for removing dead skin cells, antioxidant effect, deep hydration  
[Goat Milk Extract] Rich in nutrients as it has the most similar protein composition to breast milk, strengthens skin barriers with selenium, whitening effect with B-casein  
[Propolis Extract] Great for soothing and calming skin, maximizes moisture retention & increases skin's moisture level, prevents skin problems with antibacterial effect



**| Effects**  
[Skin Scaling] · Effectively removes blackheads, whiteheads, and dead skin cells  
· Smooths skin texture in 1 ~ 2 minutes  
[Gentle Deep Cleanser] · Gentle even for sensitive - acne-prone skin  
· May be used as 3rd step of deep cleansing without causing irritation  
[Pure & Clear Skin] · Improves dryness with goat milk  
· Improves skin complex

**| How to Use** **Dull & Tired Skin → After 1~2minutes → Smooth & Glowing Skin**

Recommend to pump \*10 times per use.  
\*Results may weaken if applied less than recommended amount.

※ May Experience Temporary  
Tingling Sensation



**1**  
Cleanse  
(Remove all makeup)



**2**  
Apply Skin Refining  
Goat Milk Peel  
for 1~2 minutes  
(Avoid lips & eye area)



**3**  
Wash off  
Goat Milk Peel &  
soothe skin



**4**  
Finish by fully  
moisturizing  
(Recommend : 4  
Solution Ampoule)

# Skin Refining Goat Milk Ampoule

스킨 리파이닝 고트밀크 앰플 50ml

Extra Gentle Goat Milk Ampoule for Sensitized Skin



## | Characteristics

A milky textured ampoule with 10 therapeutic natural ingredients to provide extra relief and long-lasting hydration for sensitized skin

## | Ingredients

[Goat Milk Extract] Rich in nutrients, strengthens skin barriers with selenium, and has whitening effect with B-Casein

[Propolis Extract] Great for soothing and calming skin, maximizes moisture retention, and prevents skin problems with antibacterial effect

### [8 Types of Plants]

Quickly calms sensitive and sensitized skin and reduces stress, prevents oxidation of the skin to brighten complexion, and gives vitality to the skin by soothing and protecting against environmental stressors

- 1) Centella Asiatica Extract
- 2) Aloe Barbadensis Leaf Extract
- 3) Scutellaria Baicalensis Root Extract
- 4) Polygonum Cuspidatum Root Extract
- 5) Camellia Sinensis Leaf Extract
- 6) Glycyrrhiza Glabra (Licorice) Root Extract
- 7) Chamomilla Recutita (Matricaria) Flower Extract
- 8) Rosmarinus Officinalis (Rosemary) Leaf Extract



## | Effects

[Soothe] Visibly soothes sensitive and irritated skin by helping to reduce stress

[Protect] Protects irritated skin and helps to improve skin conditions by protecting against environmental stressors

[Revitalize] Revitalizes dull and dry skin by increasing skin's moisture level

## | How to Use

Apply an appropriate amount to the entire face and gently massage until fully absorbed. Recommend to use with Dr. esthé's Skin Refining Goat Milk Peel





## Skin Refining Goat Milk Peel Program [1-Week / 4-Week]

스킨 리파이닝 고트밀크 필 프로그램 [1주 / 4주]

Goat Milk Peel Program to Transform Skin from Dull to Radiant and Glowing

1-Week



What's Included

- 1) Goat Milk Peel 4ml x 1ea
- 2) Goat Milk Ampoule 10ml x 1ea

4-Week



What's Included

- 1) Goat Milk Peel 4ml x 4ea
- 2) Goat Milk Ampoule 10ml x 4ea
- 3) Peel Brush x 1ea
- 4) Ampoule Dropper x 1ea

Characteristics

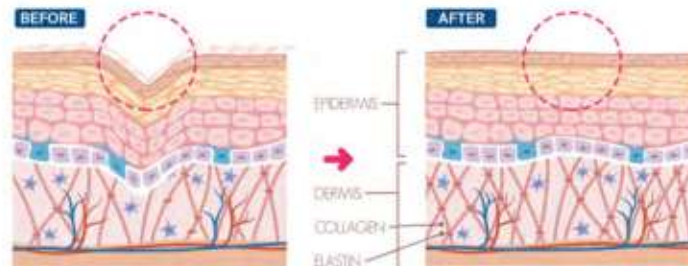
Goat Milk Peel Program helps to brighten skin complexion with a golden ratio of AHA, BHA, and PHA while soothing and moisturizing sensitized skin with goat milk extract.

- 1st Step: Skin Refining Goat Milk Peel 4ml (1-time use)  
Gentle exfoliator with AHA + BHA + PHA and goat milk extract
- 2nd Step: Skin Refining Goat Milk Ampoule 10ml (1-week use)  
Ampoule to quickly calm, soothe, and deeply moisturize

Ingredients

- [AHA] Gently removes dead skin, moisturizes dry & sensitive skin  
[BHA] Removes sebum, effective for removing blackheads  
[PHA] Removes dead skin cells, antioxidant effect, deep hydration  
[Propolis Extract] Great for soothing and calming skin, maximizes moisture retention, and prevents skin problems with antibacterial effect  
[10,000ppm of Goat Milk Extract] Rich in nutrients, strengthens skin barriers with selenium, and has whitening effect with B-Casein

Effects



1. AHA and BHA dissolves sebum, blackheads, and other skin impurities
2. Gently removes dead skin cells and smoothes out skin texture
3. Moisturizes and rejuvenates with goat milk extract

How to Use

- STEP 01: Open Goat Milk Peel and apply evenly onto clean skin using either brush or fingers. Cover the entire face from forehead to T-zone to cheek. (Avoid lip and eye area)
- STEP 02: After covering the entire face, wait 1 min. & 30sec. (For extremely sensitive skin, wait under 1 min.)
- STEP 03: Wash off the peel with warm water.
- STEP 04: After cleansing, open Goat Milk Ampoule and apply evenly on clean, dry skin for soothing and whitening effect.





## Hyal-Moisture Solution Ampoule

히알-모이스처 솔루션 앰플 150ml

Moisturizing Ampoule with 91% of May Rose Water

**| Characteristics** Moisturizing ampoule to deeply hydrate dry skin, providing long lasting moisture & glow to the skin with 91% of may rose water.

**| Ingredients**

91%

### Rosa Centifolia Flower Extract

**91% of May Rose Water:** Drenches skin with endless moisture full of vitamins A, B, C, and D providing immediate and long-lasting hydrating effects for firmer, smoother, softer-looking skin.

6 Hyal-Complex

### Hyalpol Matrix Formula

**6 Hyal- Complex :** Solution for immediate and long-lasting powerful moisturizing effect.

High-Molecular HA	Sodium Hyaluronate	Hyaluronic Acid
Mesomolecular HA	Sodium Hyaluronate	Hydrolyzed Hyaluronic Acid
Low-Molecular HA	Sodium Hyaluronate	Sodium Hyaluronate Crosspolymer



**| How to Use** Apply an appropriate amount and spread evenly onto the entire face. Gently pat into skin for optimal absorption. Use morning and night.



## Azulene Relief Solution Ampoule

아줄렌 릴리프 솔루션 앰플 52ml / 150ml

Soothing Ampoule with 86% of Green Tea Water

**| Characteristics** Soothing ampoule to quickly soothe sensitized skin and provide refreshing hydration that help to effectively alleviate skin conditions with 86% of green tea water.

**| Ingredients**

86%

### Camellia Sinensis Leaf Water

**86% of Green Tea Water :** Powerful antibacterial agent for treating acne and unclogging pores for smoother, toned skin.

Azulene

### Natural Ingredient Azulene

**Azulene:** Effectively soothes irritated skin with its high antioxidants and anti-inflammatory properties.

3

### 3 Active Ingredients : Gesolza™

**Active Ingredient Gesolza™:** Reduces stress and irritation on skin and improves skin conditions of sebum and acne.

Artemisia Annua Extract | Pinus Densiflora Leaf Extract | Citrus Junos Fruit Extract



**| How to Use** Apply an appropriate amount and spread evenly onto the entire face. Gently pat into skin for optimal absorption. Use morning and night.



## M.G.F. Renewal Solution Ampoule

엠지에프 리뉴얼 솔루션 앰플 52ml / 150ml

Rejuvenating Ampoule with 88% of Snail Secretion Filtrate

**| Characteristics** Repair ampoule to protect irritated skin and enhance skin's natural strength through intensive regenerating care with 88% of snail secretion filtrate.

**| Ingredients**

**88%** **Snail Secretion Filtrate**  
**88% of Snail Secretion Filtrate** : Promotes optimal skin health with vitamins A, E, peptides, zinc, and iron while stimulating cell renewal and reconstruction of damaged tissues.

**4GF** **4 Growth Factors**  
**Epidermal Growth Factor (EGF)** : Improves skin elasticity  
**Basic Fibroblast Growth Factor (bFGF)** : Regenerates skin & improves skin elasticity  
**Insulin-like Growth Factor-1 (IGF-1)** : Repairs damaged cell  
**Keratinocyte Growth Factor (KGF)** : Regenerates skin

**5** **5 Peptide Complex**  
**Peptide Complex** : Promotes synthesis of collagen and elastin to improve and restore skin elasticity.  
**Copper Tripeptide-1 | Acetyl Hexapeptide-8 | Hexapeptide-9**  
**Acetyl Tetrapeptide-5 | Acetyl Tetrapeptide-2**



**| How to Use** Apply an appropriate amount and spread evenly onto the entire face. Gently pat into skin for optimal absorption. Use morning and night.



## Vita-C. Radiance Solution Ampoule

비타-씨 래디언스 솔루션 앰플 52ml / 150ml

Brightening Ampoule with 72% of Lemon Water

**| Characteristics** Brightening ampoule to prevent discoloration and formation of melanin with anti-pigmentation effect to brighten dull and uneven skin tone with 72% of lemon water.

**| Ingredients**

**72%** **Citrus Limon Fruit Water**  
**72% of Lemon Water** : Rich in vitamin C and citric acid content, it helps to fight unwanted discoloration.

**14%** **Vitamin Complex**  
**14% of Vitamin Complex** : Effectively brightens dull skin with multiple vitamins including panthenol (vitamin B5) and niacinamide (vitamin B3).

**B9** **Multi-Functional B9-Vitapol**  
**Vitamin B9** : Helps to hydrate skin, reduce fine lines, protect skin from UV ray and prevent acne.

**α** **Natural Ingredient Alpha-Melight™**  
**Natural α-Bisabolol from Candela Tree** : Prevents formation of melanin and has powerful anti-pigmentation effect.



**| How to Use** Apply an appropriate amount and spread evenly onto the entire face. Gently pat into skin for optimal absorption. Use morning and night.

# Cell-Active DR Booster Solution

셀-액티브 디알 부스터 솔루션 5ml x 10vials

Dr. Booster for the Top 1% skin

## | Characteristics

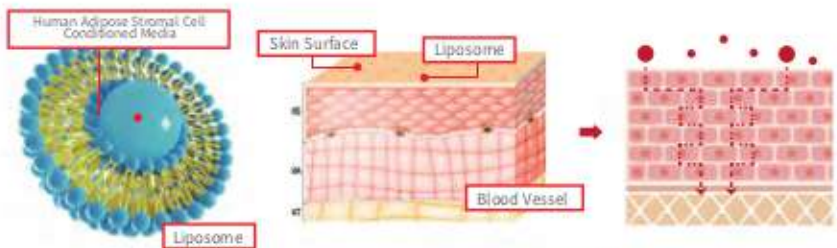
Booster solution with 20% of human adipose stromal cell conditioned media liposome to dramatically regenerate dull and tired skin.

## | Ingredients

- [20% Human Adipose Stromal Cell Conditioned Media Liposome] Repairs and prevents skin damage through 10 different types of growth factors
- [Salmon DNA] Regenerates and increases elasticity of dermis, boosts immunity
- [M,G,F.] Repairs damaged skin with 6 types of peptides
- [Multi Hyaluronic Acid] Increases moisture level and strengthens protective barrier through 8 multiple hyaluronic acids



## NANO Capsulation Liposome



Safely delivers active ingredients through the dermis layer

[1/4900 the Size of Pores Nanosized Liposomes]

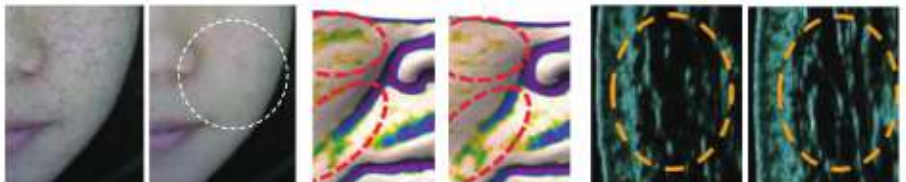
The latest technology to help human adipose stromal cell conditioned media penetrate the skin without any loss

## | Effects

Helps to solve 10+ skin troubles at once

Repair, Sebum Control, Pore Contraction, Anti-Wrinkle, Antioxidant, Skin Elasticity, Blemish Relief, Nourishing, Moisturizing, Brightening

## | Before & After



[Figure 1]

[Figure 2]

[Figure 3]

[Figure 1] Reduced Pore Size

[Figure 2] Shortened the depth and length of wrinkles around the mouth area through the lifting effect.

[Figure 3] Increased Skin Elasticity through Improved Dermal Density

## | How to Use

From dull, tired aged skin - **Cell-Active DR Booster Solution** - To healthy, glowing youthful skin

<b>STEPS   Dr. Booster</b>	Cleanse (Remove Makeup)	Apply Numbing Cream	Derma Stamp (Use NTU/lever to create small holes)	Apply <b>Dr. esthé</b> Cell-Active DR Booster Solution	Use Penetration Equipment (LDM/Cryolipolysis)	Rejuvenating & Soothing Care
----------------------------	----------------------------	---------------------	------------------------------------------------------	-----------------------------------------------------------	--------------------------------------------------	------------------------------

| Size | 5ml x 10 vials

| Suggested Usage | Perform 4 treatments with 1-2 week intervals / After the 4th treatment, maintain by performing 1 treatment with 4-week intervals

| How to Use | Shake well before using and absorb using various surgical equipment and skin penetrators. ● This product is not intended for injection. ●

## AC CARE



### AC Solution 30ml

Antibacterial + Anti-Inflammatory + Sebum Control Solution for Acne Treatment



### AC 2 - SET 30ml+30ml

Specialized Set of AC and A2 Solution for Acne Care



### AC Soothing Cream 60g

Hydrating + Soothing Cream for Oily and Acne-Prone Skin



### A2 Solution 30ml

Sebum Control + Hydrating + Soothing Toner for Oily and Acne-Prone Skin



### AC Serum 50ml

Sebum Control + Hydrating Serum for Oily and Acne-Prone Skin



### AC Control Mousse Cleanser 150ml

Mild Foam Cleanser for Oily and Acne-Prone Skin

## Cleansing



### Enzyme Deep Clear Powder Wash 50g

Protein-Decomposing Enzyme Deep Cleansing Powder Wash for All Skin Types

## Repair



### Skin Laser Solution 30ml

Quickly Soothes + Recovers Sensitive Skin Conditions after Dermatology Treatment



### EGF Spot Recovery 15ml

Spot Treatment to Regenerate Skin Cells and Relieve Inflammation after Dermatology Treatment



### Rejuvenating Ampoule 30ml

Revitalize + Refresh Dull Skin with Vital Rejuvenating Ingredient, PDRN



### SKin Solution Mask - Soothing 20ml

Sheet Mask to Soothe + Alleviate Hot Flashes - for After Treatment



### Skin Laser Toner 85ml

Quickly Soothes + Recovers Sensitive Skin Conditions after Dermatology Treatment (Mist-Type)



### Cica Pepta Cream 50g

Repairing Cream, Rich in Peptide, to Help Recover Damaged Skin after Dermatology Treatment



### Madecassona Repair Cream 50ml

Regenerates the Outer Layer of Damaged Skin and Corrects Wrinkles

Anti-Wrinkle Effects



### Soothing & Moisture Mask 30ml

Sheet Mask to Purify + Soothe + Fully Moisturize Sensitive Skin - for Daily Use

## Moisturizing



### Dual Barrier Lotion 200g

Non-Irritating + Highly Moisturizing Lotion for Sensitive, Intolerant Skin



### Aqua Infusion Water Drop 60ml

Water-Drop Type Moisturizing Cream that Leaves Skin Supple and Healthy without Irritation or Stickiness



### Dual Barrier Cream 100g

Non-Irritating + Highly Moisturizing Cream for Sensitive, Intolerant Skin

## Whitening

## UV Care



### Whitening A Serum 50ml

Serum Formulated to Brighten + Enhance Skin Tone + Hydrate + Vitalize Dull & Tired Skin

Whitening Effects



### Sun Protection Cream 50ml

SPF50+/PA+++  
Moisturizing Sunscreen for Sensitive and Dry Skin after Dermatology Treatment



### UV Protector 60ml

SPF50+ / PA+++  
Waterproof Sunscreen with Soothing Effect to Protect Skin from Intense UV Rays



### Sun Protection Mild 50ml

SPF50+/PA+++  
Lightweight Sunscreen for Oily and Acne-Prone Skin



### Pepta BB Cream 50ml

SPF 37/PA+++  
BB Cream with 8 Types of Peptides to Help Regenerate + Hydrate Damaged & Sensitive Skin

Anti-Wrinkle + Whitening Effects

## Scalp Care



### Seboric Shampoo 130ml

Formulated for Cleansing Oily Scalp with Dandruff and Itchiness



### 501 Shampoo 300ml

Helps to Alleviate Hair Loss Symptoms & Improve Scalp Conditions

Alleviate Hair Loss Symptoms

## ESTHETIC 1000ml



### Makeup Remover 1000ml

Mild Makeup Remover with EWG Green Grade Extracts



### Post Cleansing Gel 1000ml

Safe & Gentle Cleansing Gel Formulated for Damaged & Sensitive Skin after Treatment



### Milk Cleanser 1000ml

Rinse-Free Gentle Cleanser to Moisturize and Protect Sensitive Skin



### A2 Solution 1000ml

Sebum Control + Hydrating + Soothing Solution for Oily and Acne-Prone Skin



### Skin Laser Solution 1000ml

Quickly Soothes + Recovers Sensitive Skin Conditions after Dermatology Treatment



### Aloe Soothing Gel 1000ml

Aloe Gel with Excellent Soothing Effect (94.6% of Aloe)



### Jasmine Aroma Collagen Moisturizer 1000ml

Skin Elasticity + Moisture + Glow - 3 in 1 Collagen Moisturizer



### Jasmine Aroma Collagen Massage Lotion 1000ml

Skin Elasticity + Circulation+ Vitality - 3 in 1 Collagen Massage Lotion



### Hyal-Moisture Solution Ampoule 150ml

Moisturizing Ampoule with 91% of May Rose Water



### Azulene Relief Solution Ampoule 150ml

Soothing Ampoule with 86% of Green Tea Water



### M.G.F. Renewal Solution Ampoule 150ml

Regenerating Ampoule with 88% of Snail Secretion Filtrate

Anti-Wrinkle Effects



### Vita C, Radiance Solution Ampoule 150ml

Brightening Ampoule with 72% of Lemon Water

Whitening Effects



### Skin Refining Goat Milk Peel 150ml

Quick + Hydrating + Hypoallergenic Gentle Exfoliator for All Skin Types



### Cell-Active DR Booster Solution 5ml x 10vials

Booster Solution with 20% of Human Adipose Stromal Cell Conditioned Media Liposome for Dramatically Regeneration

Anti-Wrinkle Effects

# Dr.esthé

| Cosmetics for Dermatology Clinics & Hospitals |